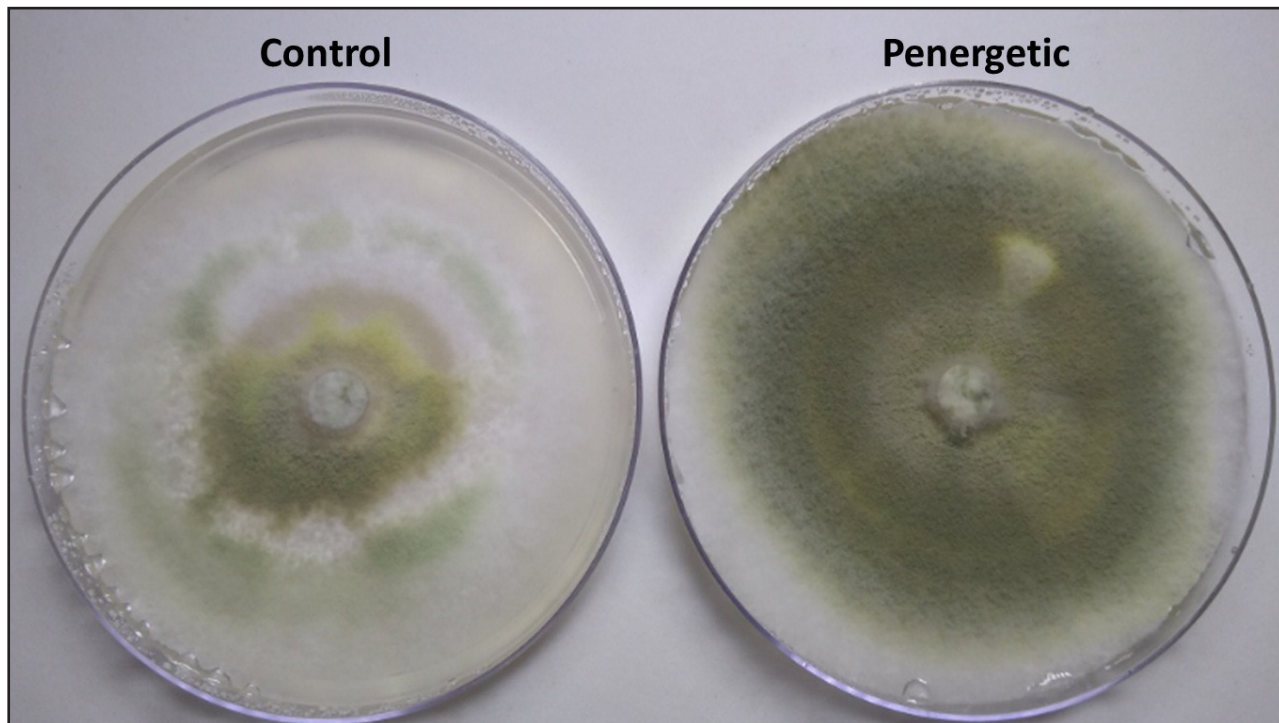


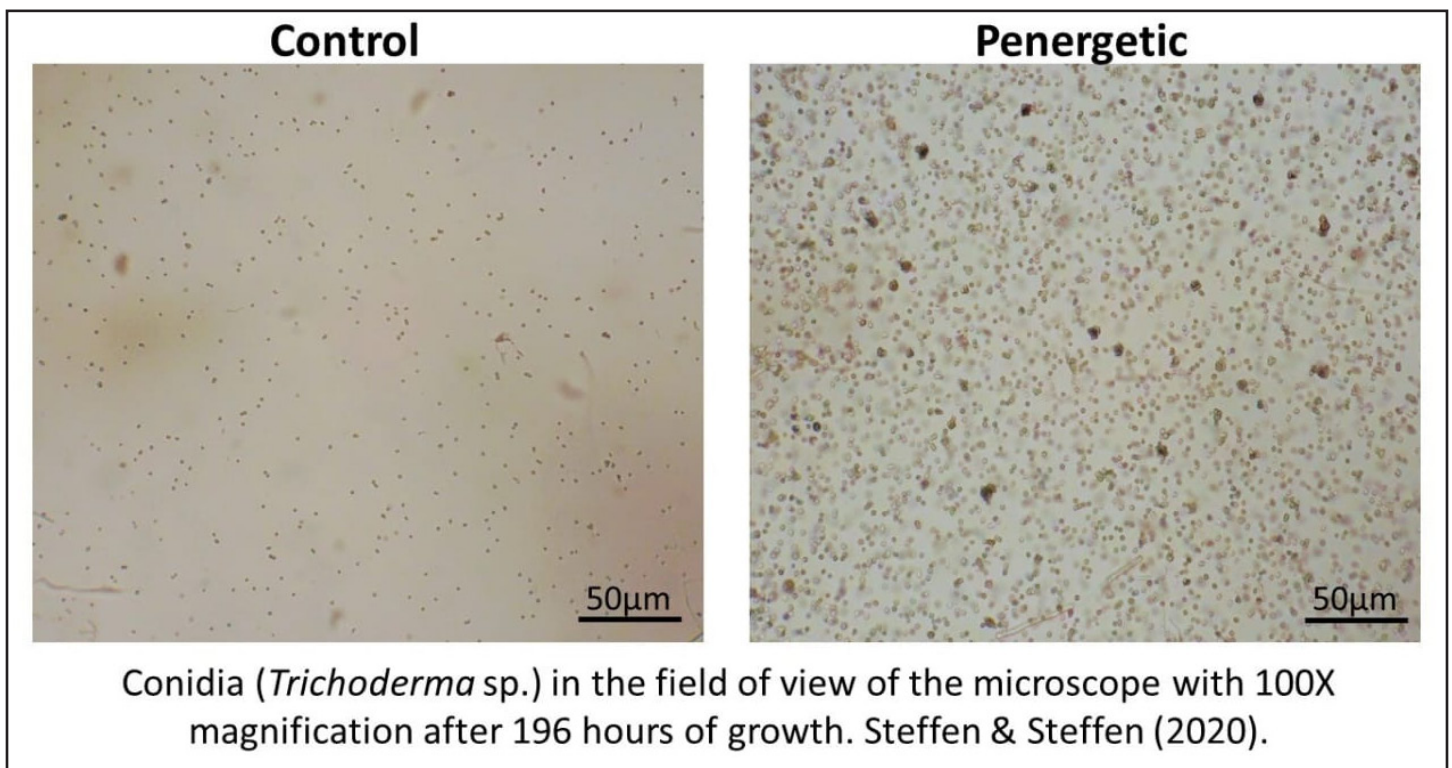
Comparison of Control and Penergetic p Growth of Trichoderma

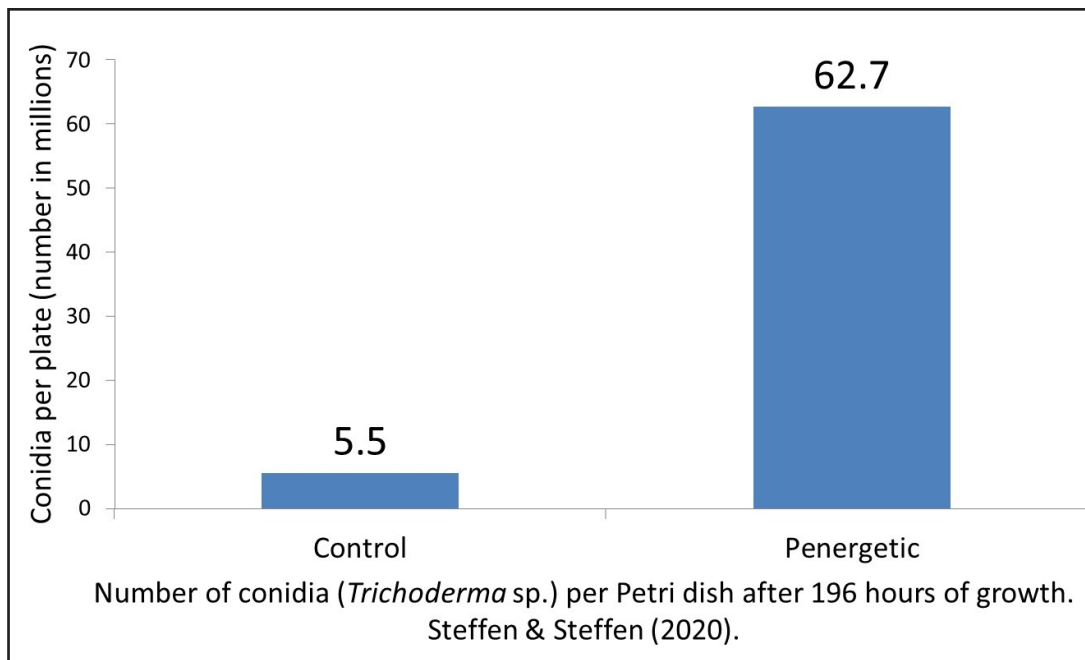


Microbial growth (*Trichoderma* fungus) 144 hours after incubation.

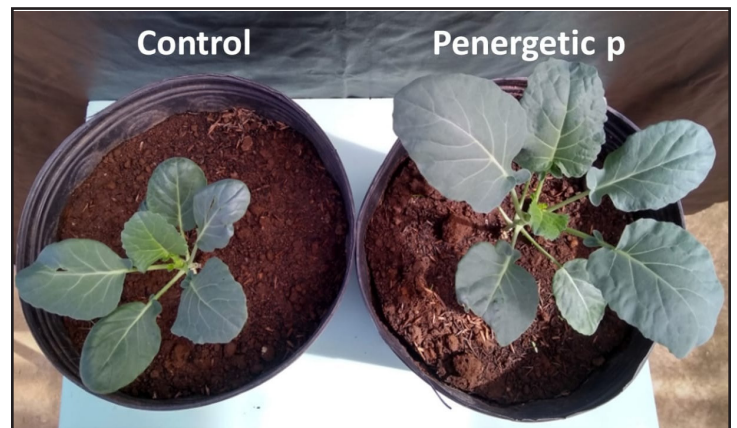
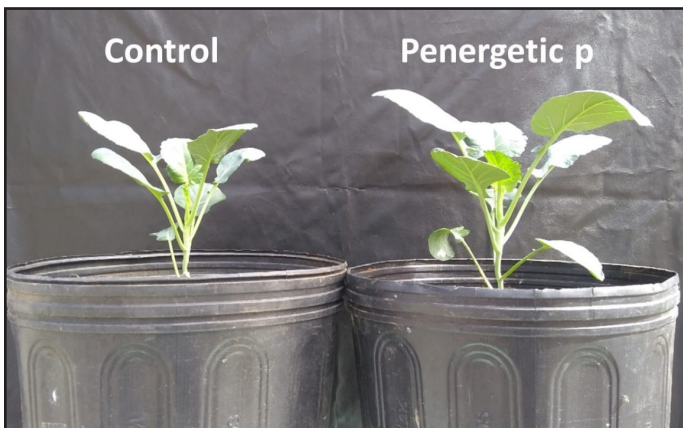
Trichoderma is the most important biological agent (biological control fungus) for agriculture. The stimulating effect of Penergetic p on *Trichoderma* is fantastic.

Ricardo Bernfica Steffen,





The effect of stimulating microbial growth is fantastic. The result of this stimulus is increased productivity. Penergetic stimulates 11 times more *Trichoderma* sp.. This effect can also be widely observed in the field. For instance: using Penergetic on vegetable seedlings results in a significant increase in plant development.



Why does this effect occur?

Part of the answer is due to increased root growth, which may be the most important effect for improving plant development.

More roots = greater water absorption, greater physiological stability, greater condition to express potential and less water, nutritional and physiological stresses. The photo opposite explains everything.

